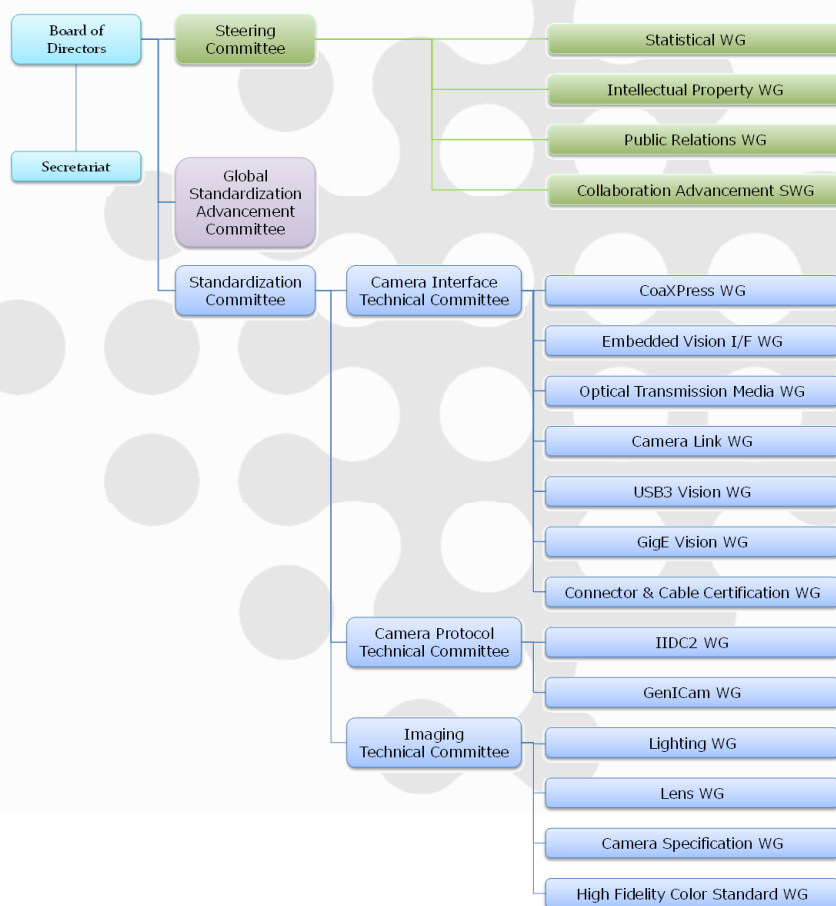


Activity of JIJA

Japan Industrial Imaging Association (JIJA) is a Japan-based organization fostering technological innovation of industrial imaging, thereby contributing to development of industrial imaging worldwide.

1. To establish and foster standards of advanced industrial imaging technology.
2. To study and research international, cross-sectional standardization of industrial imaging technology.
3. To conduct seminars and lectures and exchange information on industrial imaging.
4. To disseminate information from meetings related to standardization.
5. To conduct market and technical trend analyses of the industrial imaging industry.
6. To organize and support conferences and other events related to industrial imaging.
7. To engage in activities ancillary to the foregoing.

Organization of JIJA

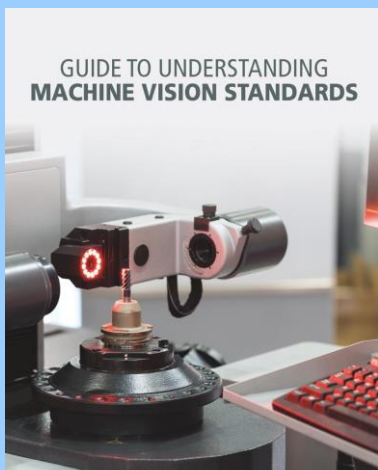


Japan Industrial Imaging Association

In c/o Advanced Communication Media
 2-21-27, Hyakunin-cho, Shinjyuku-ku,
 Tokyo 169-0073 Japan
 TEL. 81-3-3361-6880
<http://jiia.org>



GUIDE TO UNDERSTANDING
MACHINE VISION STANDARDS



To get the brochure from :
<https://www.emva.org/standards-technology/emva-standardization-philosophy/>

SLVS-EC



SLVS-EC is a high speed interface between image sensor and processor. 8B10B architecture allows easy to assemble and therefore suitable for high speed and long distance transmission. Multi lane function supports various applications.

Optical Transmission Media



High speed imagers like the CMOS sensor are well adopted in the MV market. The Optical Transmission Media WG has three types of the optical media to offer the suitable solution.

CoaXPress®



CoaXPress is a scalable interface to connect devices to hosts. It combines the simplicity of 75 ohm coaxial cable with serial data transfer upto 12.5 Gbps, plus camera control and power in the same cable. Now Optical fiber option is available.

iIDCII



IIDC2 offers common method for controlling cameras with various kinds of interfaces and models. IIDC2 standard uses a flexible-fixed camera control register layout. It is a very simple approach for controlling cameras.

USB VISION



USB3 Vision standard is a camera standard using USB 3.0 interface. This standard offers high speed of 5Gbps and a low-cost solution by the PC standard interface.

GEN<i>CAM



GeniCam provides the same application programming interface (API) for all kinds of cameras, no matter what hardware interface technology is used or what features are implemented.

GigE VISION



GigE Vision standard uses the Ethernet (IEEE802.3) communication standard. GigE Vision supports multiple stream channels and allows for fast error-free image transfer over very long distances.

1288

EMVA Standard Compliant



The EMVA1288 Standard is an electronic measurement standard to fill a need for a more uniform and standardized way of specifying the performance of image sensors and cameras.

CAMERA Link®



Camera Link® is a high speed digital IF standard since 2000. Currently, many choice is possible as needed and PoCL also allows one cable system.

Lighting Standard



Lighting standards are covering the methodology of lighting design, performance measurement, specification notation and other technical items. Our team is also involved in activities of GeniCam SFNC for Machine Vision Lighting.

CAMERA LinkHS®



Camera Link HS supports the extra high speed data transmission using 2 types of protocol: M-Protocol for 3 Gbps over copper cable, X-protocol for 10 Gbps over fiber cable. It supports the real time trigger with low jitter.



JIIA Lens Working Group has enacted 7 lens mount Standards for high resolution MV camera . Currently, the standards are enacted as S mount, NF/NF-J mount, TFL/TFL-II mount, and CFL/CFL-II/CFL-III mount.